

# **Water Quality Report**

Lake Cane Restoration Society  
Board Meeting  
2017-09-14

# LAKEWATCH Data

## Overall Quality

April 13, 2017

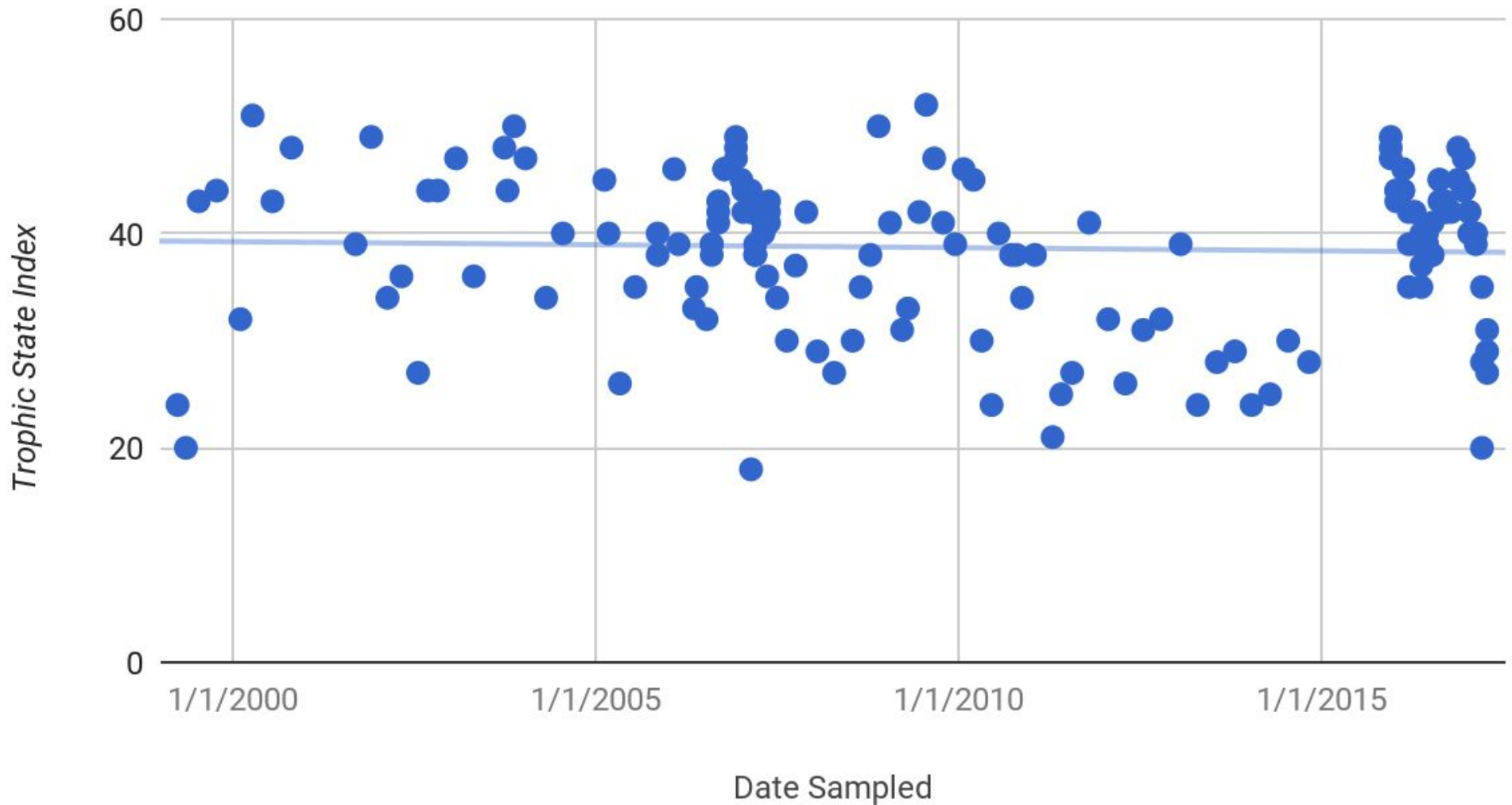
*higher is better*

- GOOD 27
- Last report (from December 2016) 44
- Average for April 34
- Last year same time 41
- 2014 same time 25
- Range 18 - 52

# LAKEWATCH Data

## Overall Quality

Water Quality over Time



# LAKEWATCH Data

## Secchi Depth

April 13, 2017

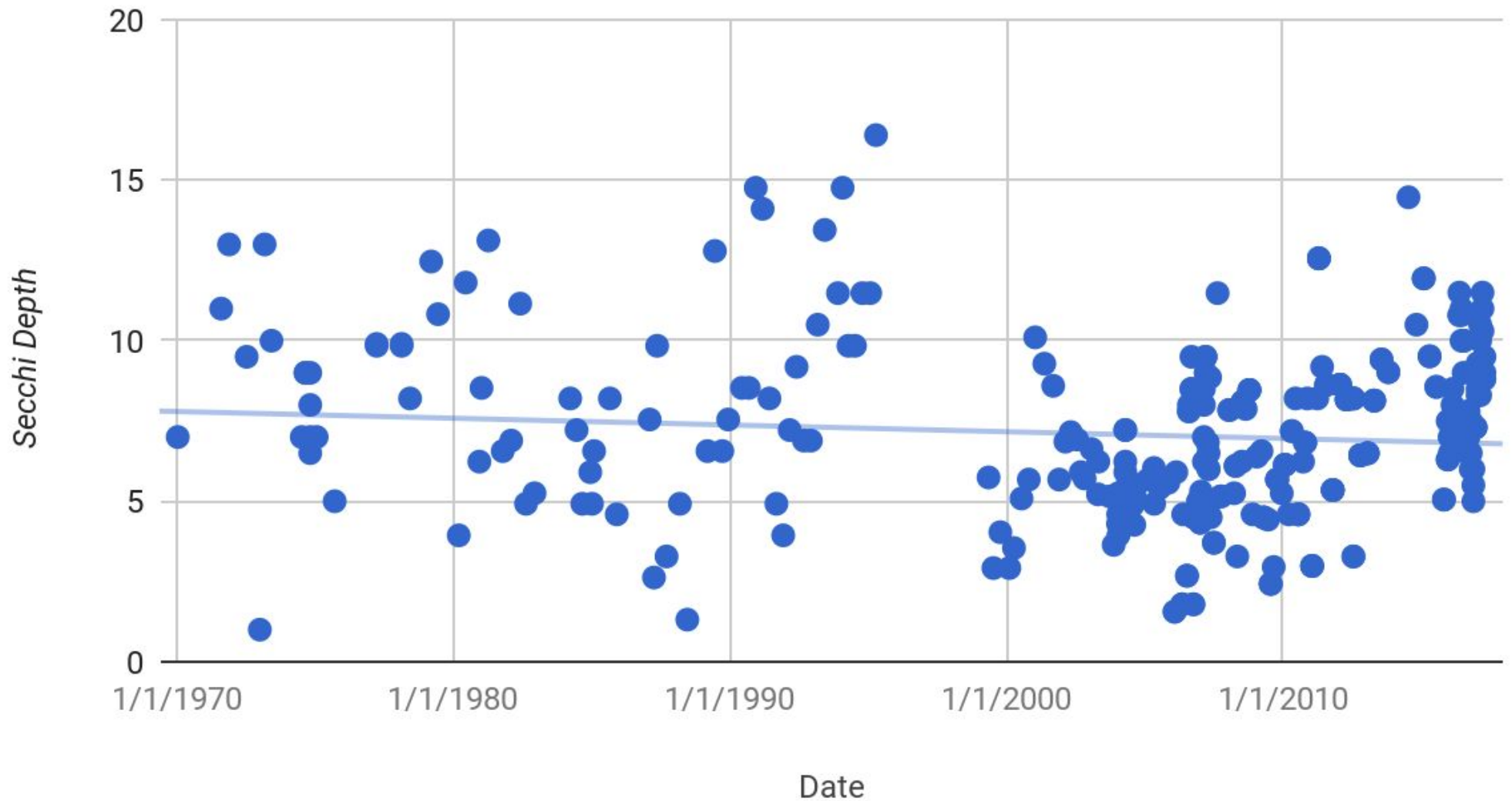
*visibility - higher is better - units are feet*

- Mesotrophic 8.8
- Last report (December 2017) 7.3
- Average for April 7.6
- 2016 same time 6.9
- 2015 same time 9.5
- 2014 same time no data

# LAKEWATCH Data

## Secchi Depth

Visibility over Time



# LAKEWATCH Data

## Phosphorus Level

April 13, 2017

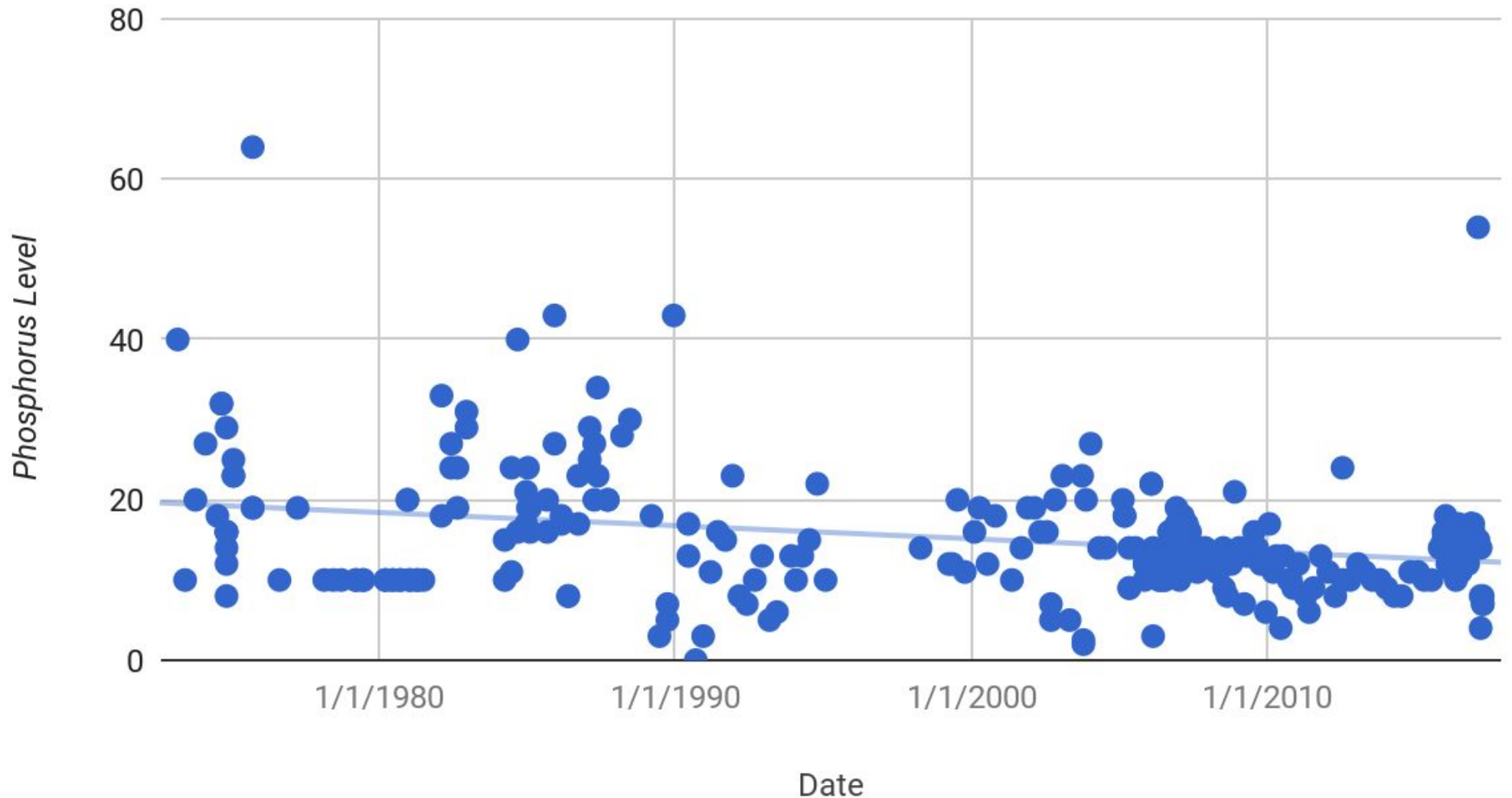
*lower is better & units are  $\mu\text{g/L}$*

- oligotrophic 7
- last report (from December 2016) 11
- Average for April 13
- 2015 same time 15
- 2014 same time 8

# LAKEWATCH Data

## Phosphorus Level

Phosphorus Level over Time



# LAKEWATCH Data

## Nitrogen Level

April 13, 2017

*lower is better & units are  $\mu\text{g/L}$*

- oligotrophic 310
- Last report (December 2016) 480
- Average for April 597
- 2015 same time no data
- 2014 same time no data



# LAKEWATCH Data

## Nitrogen Level

Nitrogen Level over Time

