

Water Quality Report

Lake Cane Restoration Society
Board Meeting
2017-11-09

LAKEWATCH Data

Overall Quality

April 13, 2017

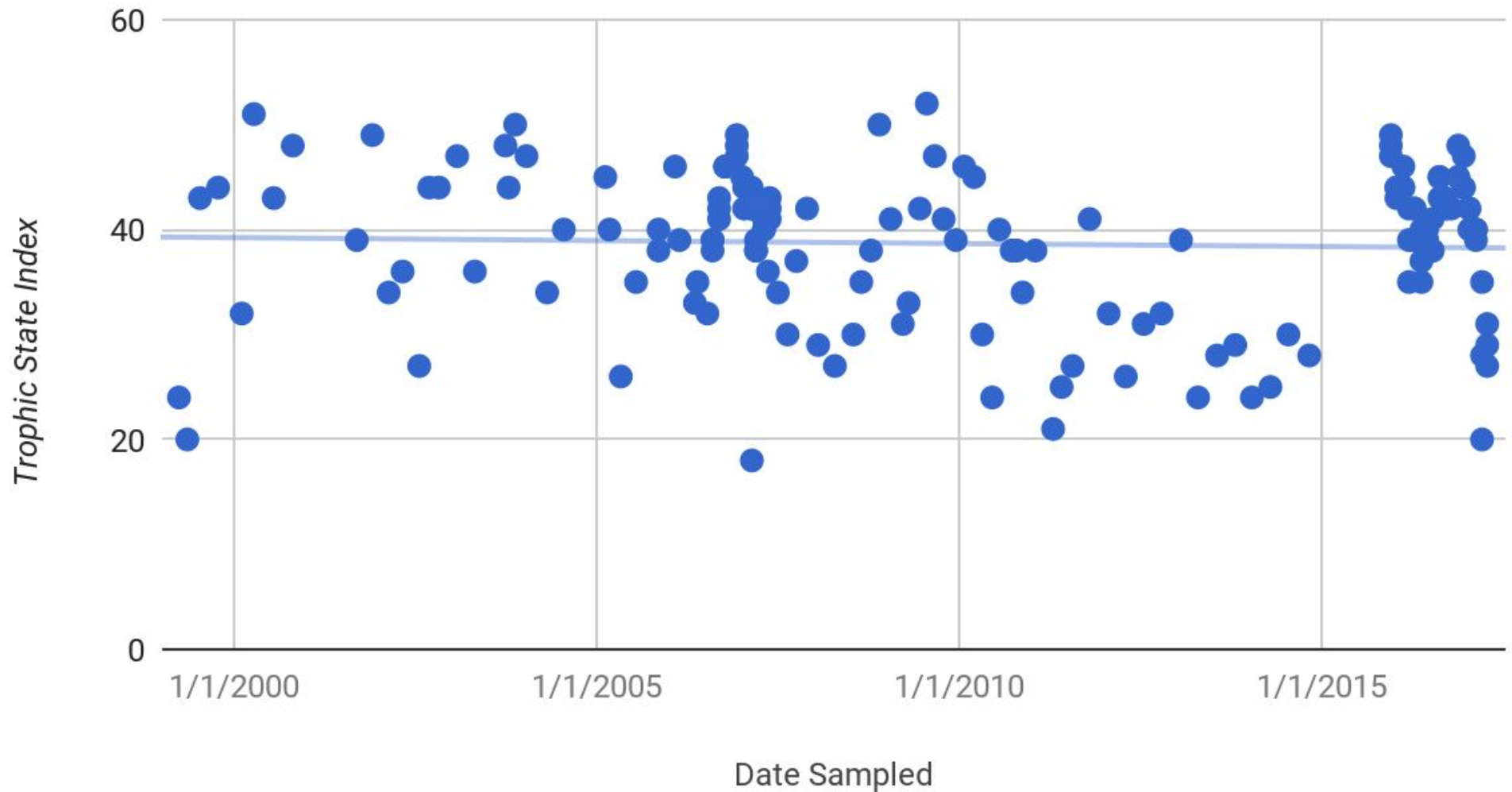
higher is better

- GOOD 27
- Last report (from April 2017) 44
- Average for April 34
- Last year same time 41
- 2014 same time 25
- Range 18 - 52

LAKEWATCH Data

Overall Quality

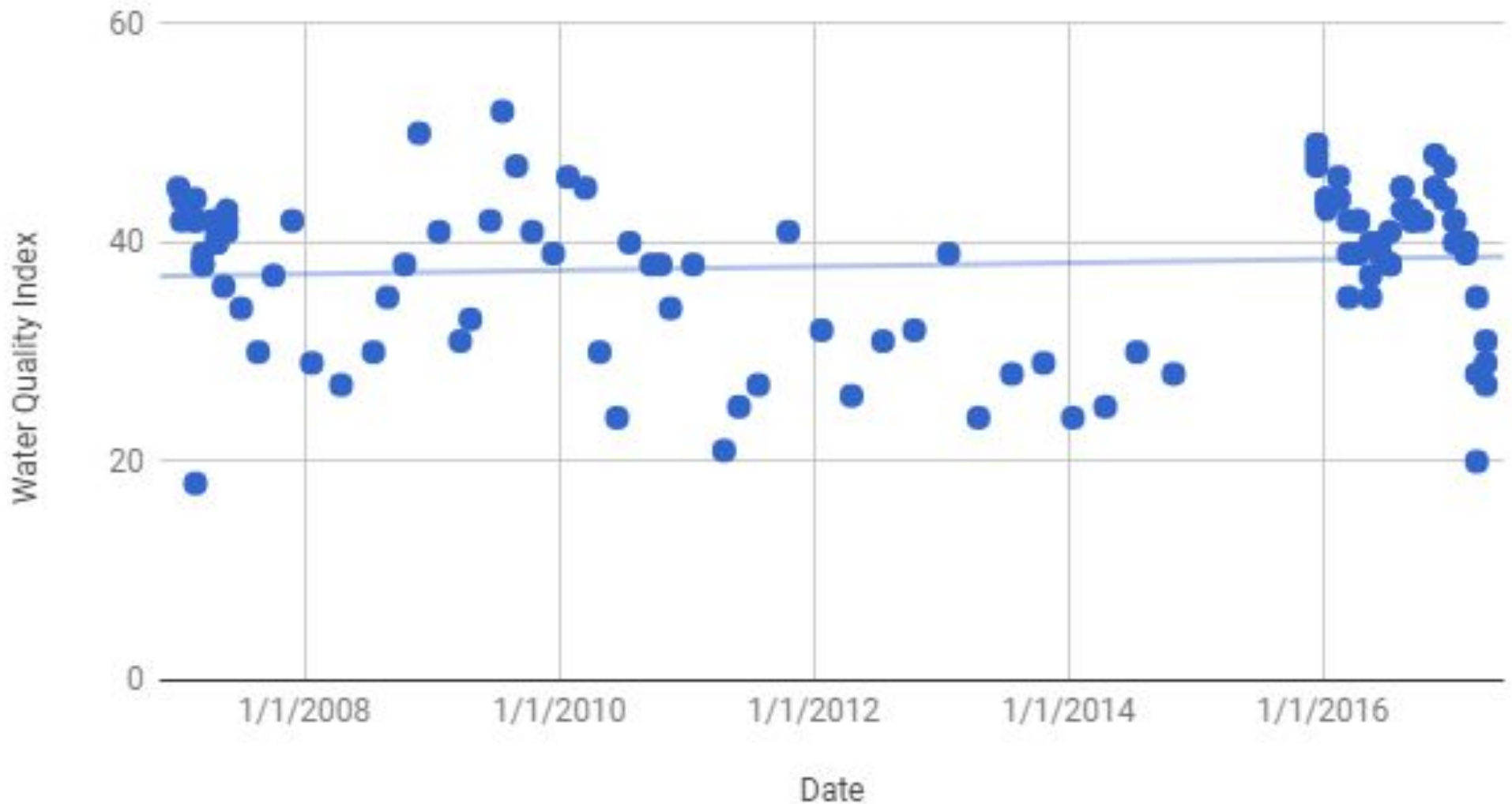
Water Quality over Time



LAKEWATCH Data

Overall Quality

Water Quality over the past 10 years



LAKEWATCH Data

Secchi Depth

April 13, 2017

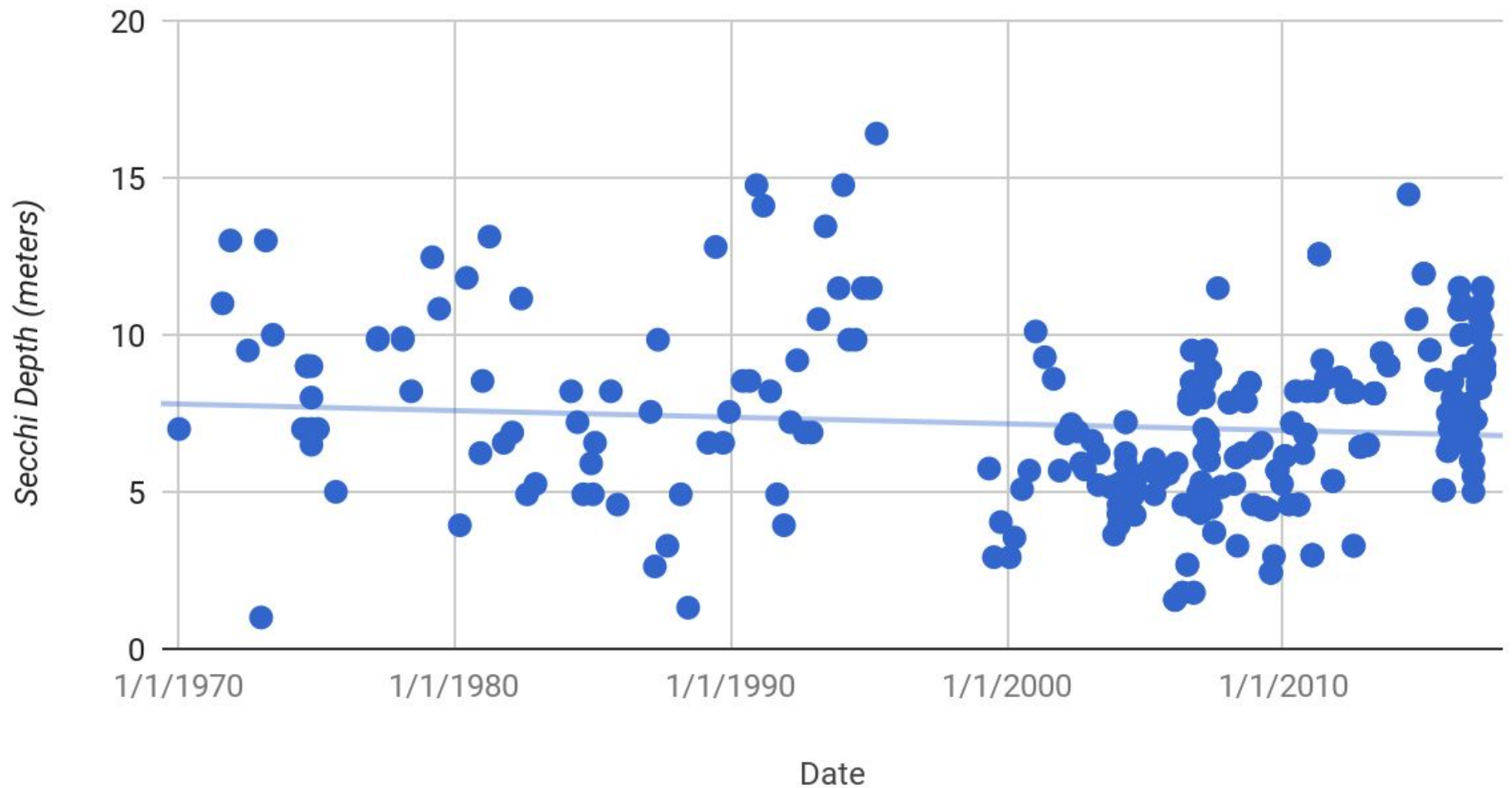
visibility - higher is better - units are feet

- Mesotrophic 8.8
- Last report (December 2017) 7.3
- Average for April 7.6
- 2016 same time 6.9
- 2015 same time 9.5
- 2014 same time no data

LAKEWATCH Data

Secchi Depth

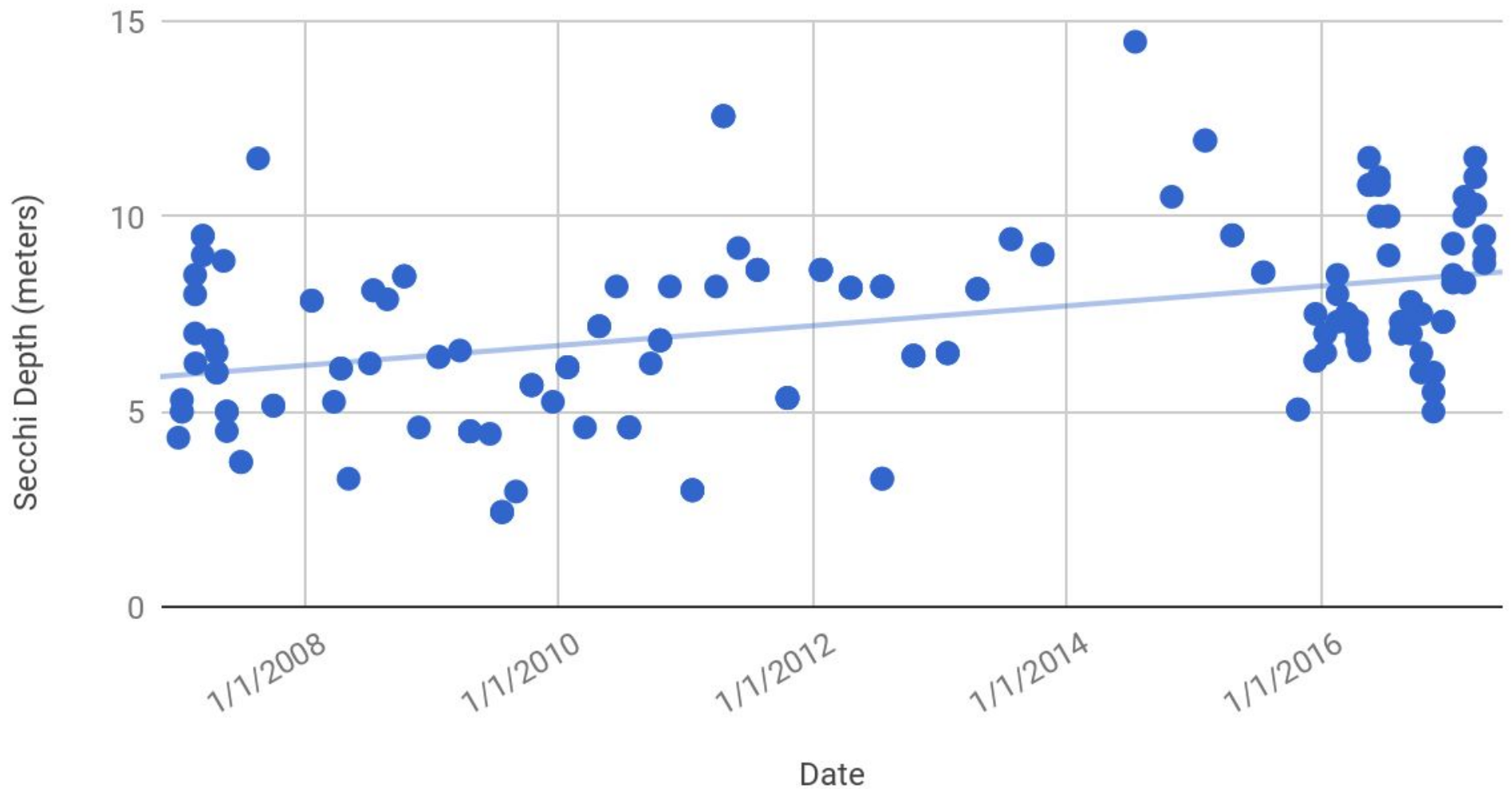
Visibility over Time



LAKEWATCH Data

Secchi Depth

Visibility over the past ten years



LAKEWATCH Data

Phosphorus Level

April 13, 2017

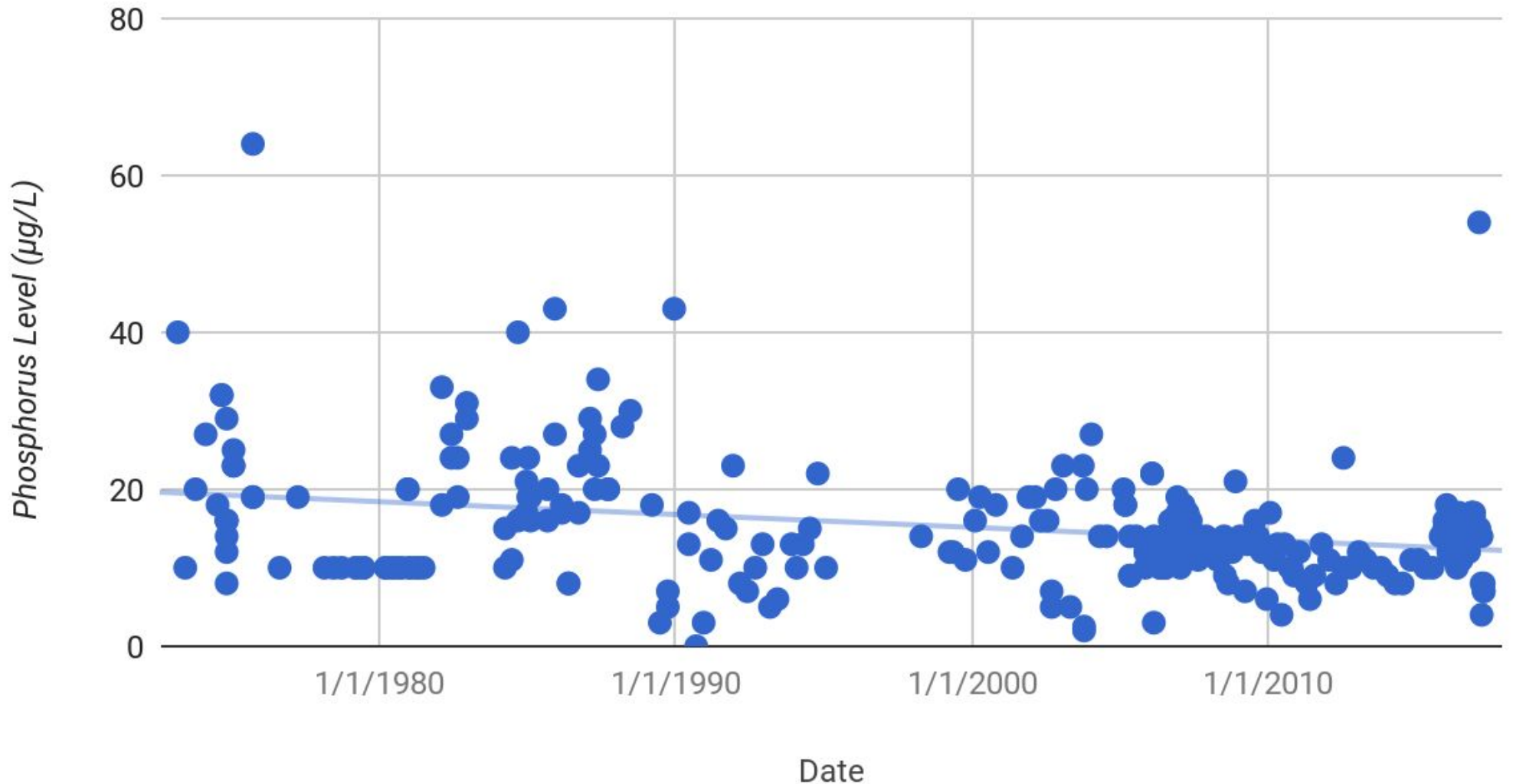
lower is better & units are $\mu\text{g/L}$

- oligotrophic 7
- last report (from December 2016) 11
- Average for April 13
- 2015 same time 15
- 2014 same time 8

LAKEWATCH Data

Phosphorus Level

Phosphorus Level over Time



LAKEWATCH Data

Nitrogen Level

April 13, 2017

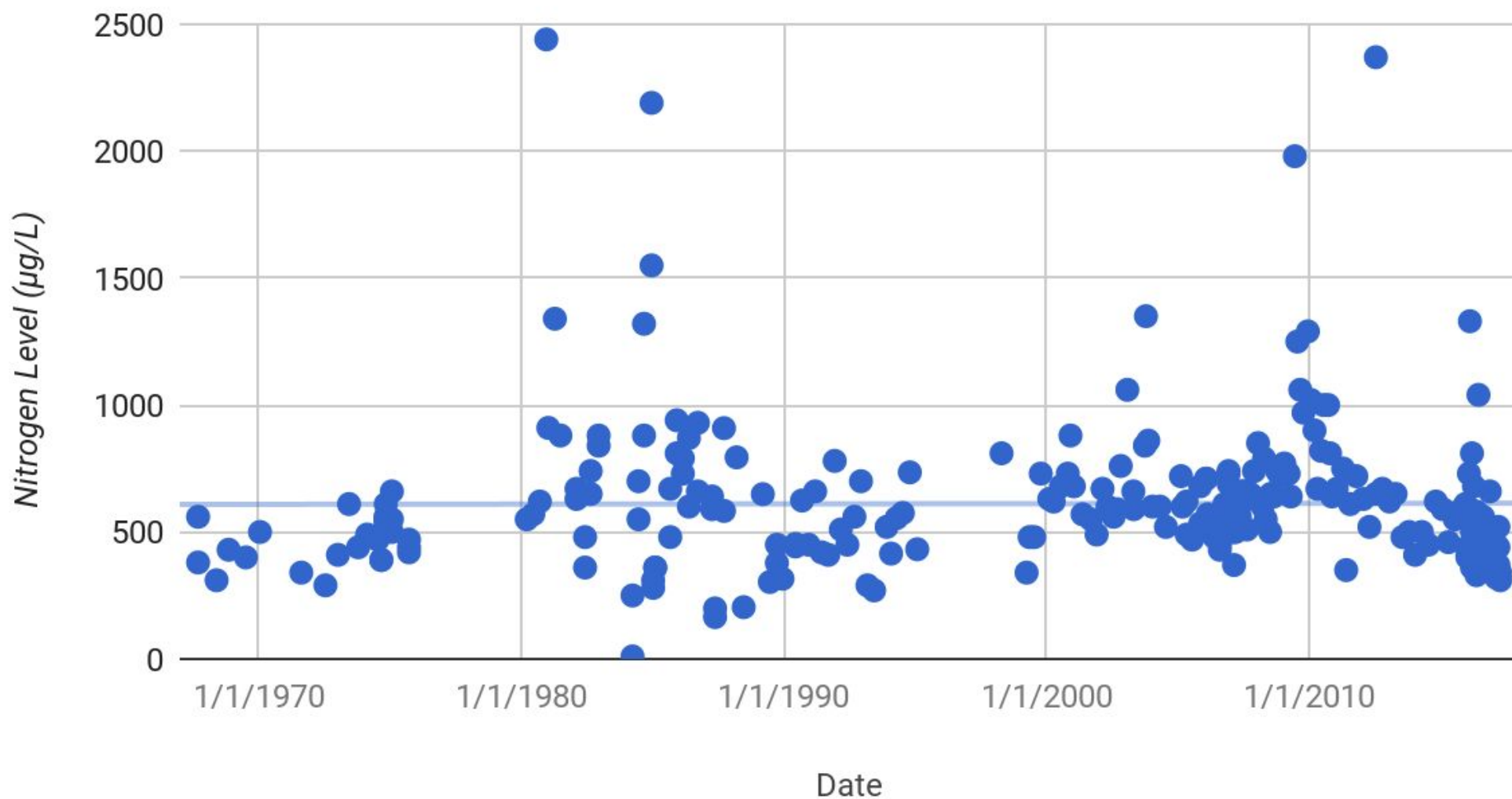
lower is better & units are $\mu\text{g/L}$

- oligotrophic 310
- Last report (December 2016) 480
- Average for April 597
- 2015 same time no data
- 2014 same time no data

LAKEWATCH Data

Nitrogen Level

Nitrogen Level over Time



LAKEWATCH Data

Nitrogen Level

Nitrogen Level over the past 10 years

